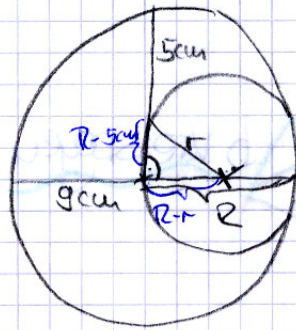


S. 10/13



$$I) (R-r)^2 + (R-5\text{cm})^2 = r^2$$

$$II) 2R - 9\text{cm} = 2r \Rightarrow r = R - 4,5\text{cm}$$

$$I) R^2 - 2Rr + r^2 + R^2 - 10\text{cm} \cdot R + 25\text{cm}^2 = r^2$$

$$2R^2 - 2Rr + r^2 - 10\text{cm} \cdot R + 25\text{cm}^2 = r^2 \quad | -r^2$$

$$2R^2 - 2Rr - 10\text{cm} \cdot R + 25\text{cm}^2 = 0$$

↑ einsetzen

Rh.