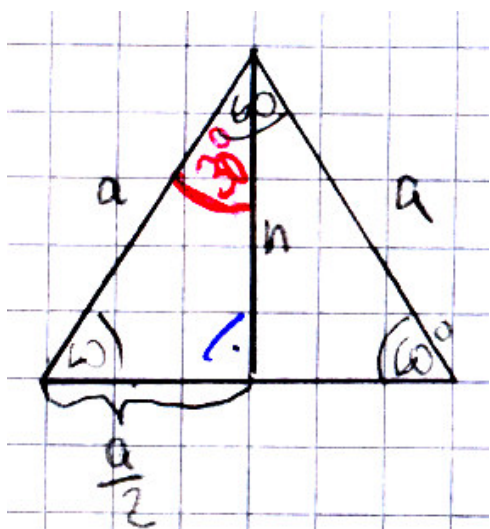


Herleitung von  $\sin 30^\circ$ ,  $\cos 30^\circ$  und  $\tan 30^\circ$



$$\sin 30^\circ = \frac{a}{2} = \frac{1}{2}$$
$$\cos 30^\circ = \frac{h}{a} = \frac{1}{2} \sqrt{3}$$
$$\tan 30^\circ = \frac{\frac{a}{2}}{h} = \frac{\frac{a}{2}}{\frac{\sqrt{3}}{2} a} =$$
$$= \frac{a}{2} \frac{2}{\sqrt{3} a} = \frac{1}{\sqrt{3}} = \frac{\sqrt{3}}{3} = \frac{1}{3} \sqrt{3} \text{ Rh.}$$